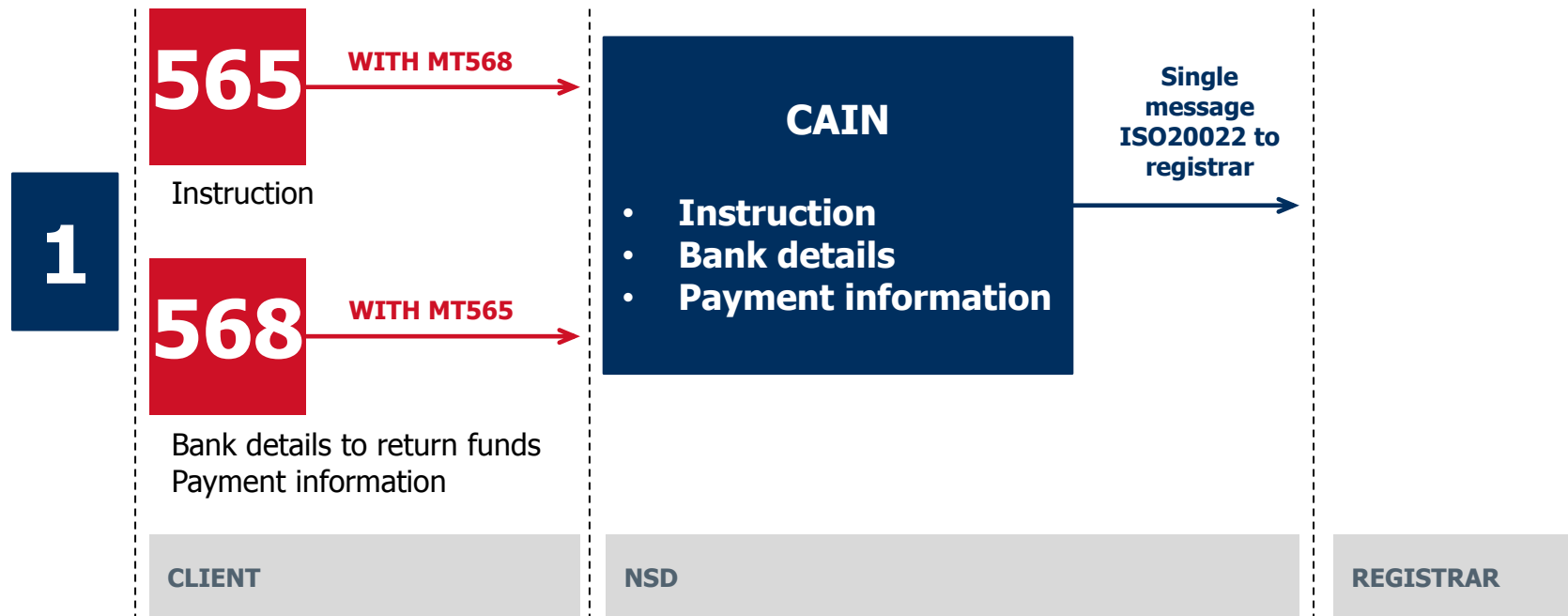
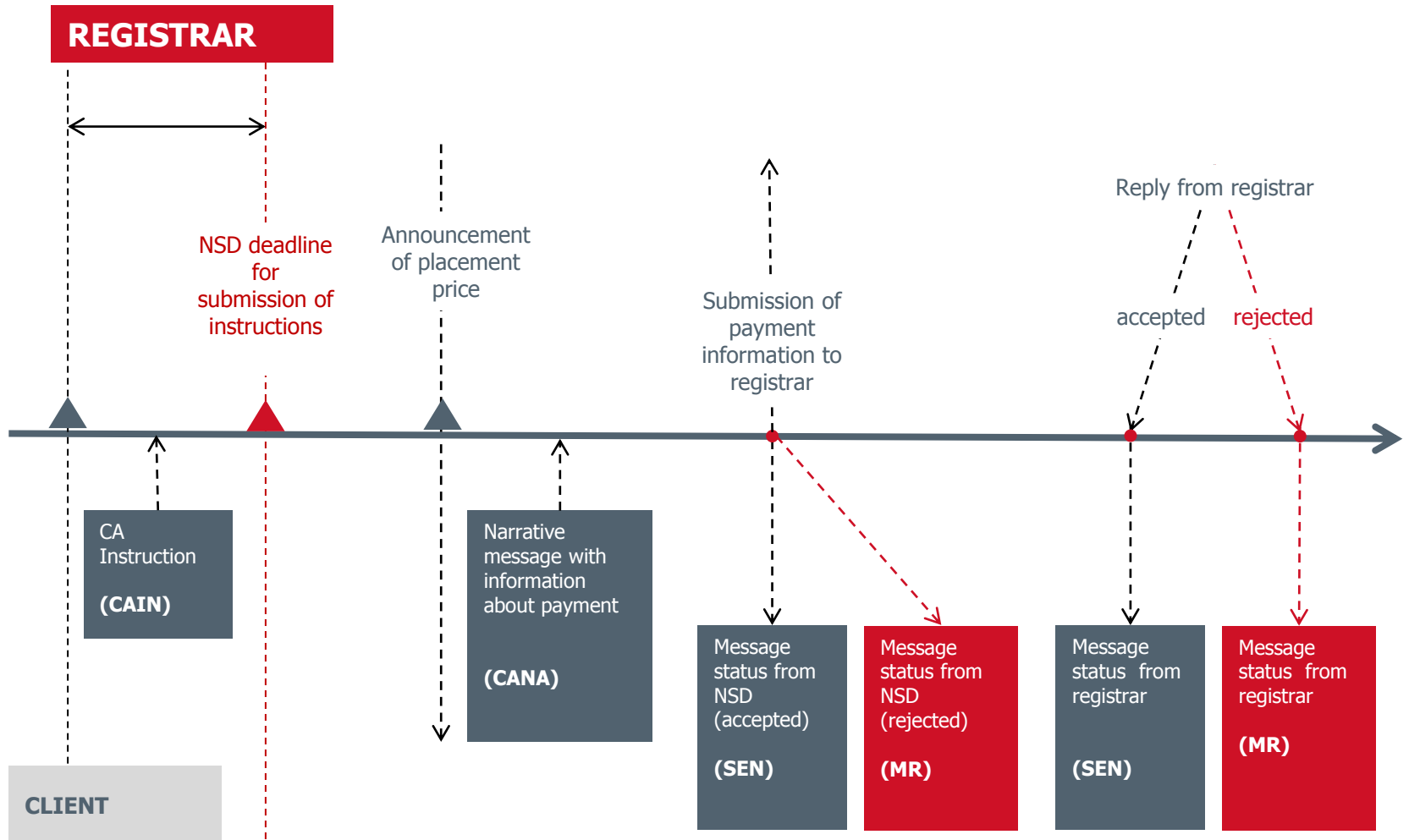


PRIO. PLACEMENT PRICE ANNOUNCED. SWIFT INSTRUCTIONS

When placement price is announced, client must submit instruction with payment information. In this case message MT568 with payment information must be linked (**WITH**) with CA instruction MT565 and single message will be submitted to registrar.

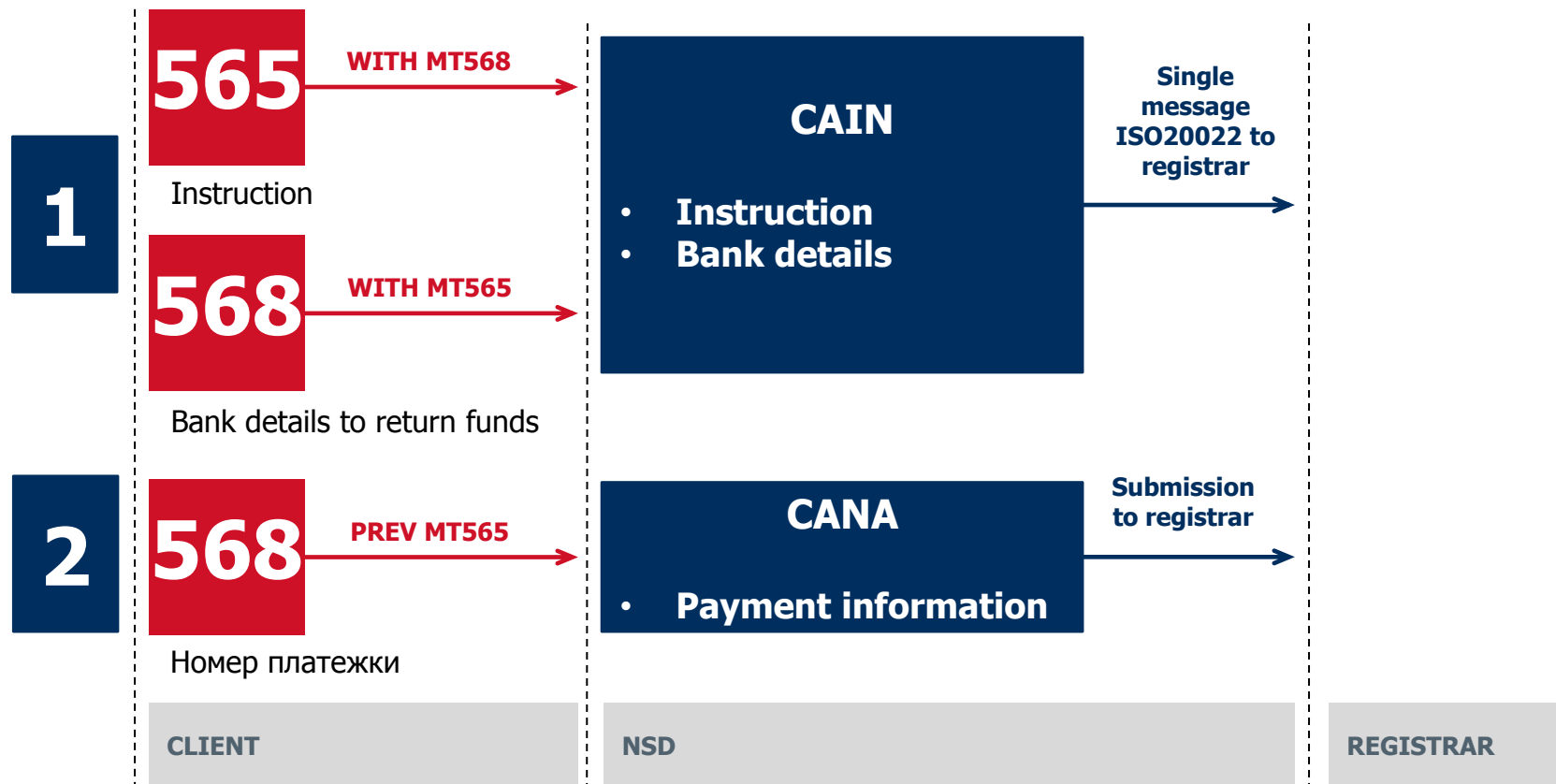


PRIO. CA INSTRUCTION PLACEMENT PRICE UNKNOWN



PRIO. PLACEMENT PRICE UNKNOWN. SWIFT INSTRUCTIONS

When placement price is unknown, client submit instruction without payment information. Payment information will be provided later upon placement price announcement. In this case message MT568 with payment information must be linked (**PREV**) with previously submitted CA instruction MT565.



PRIO. CA INSTRUCTION CANCELLATION REQUEST

REGISTRAR

